

## ATTN: Japanese Language Program at Kawauchi Students

-A Tohoku-dai ID is necessary to take Japanese Language Program classes.  
If you have not received your ID, please contact your department.

-Please carefully read the Guide on the pages below before applying for a Nihongo ID.

-You must log in to the campus network to apply for a Nihongo ID.  
(Please remember to enable the VPN service in your device settings.)  
You can apply for the Nihongo ID from overseas.

Campus wi-fi

<https://www.dc.tohoku.ac.jp/guide/wifi/wifi-e.html>

VPN service

<https://www.tains.tohoku.ac.jp/contents/remote/vpnstudent.html>

-Access the following URL from the campus network to log in to the academic affairs system and apply for a Nihongo ID.

<https://jlpk.bureau.tohoku.ac.jp/entry/>

- Both online and in-person classes for the Japanese Language Program at Kawauchi use Google Classroom. When attending in-person classes, please comply with Tohoku University's Emergency Action Plan (BCP).

-Check the Google Classroom codes of the classes you want to take on the Japanese Language Program website and join the Classroom.

<https://www.jlpk.ihe.tohoku.ac.jp/files/JLPK/classroomcode.pdf>



-We will answer your inquiries by email.

If you inquire after 16:00 (JST) or on a holiday, we will respond on the next business day. Depending on the content of the inquiry, it may take us a while to answer. Thank you for your patience.

(We cannot answer inquiries about the Tohoku-dai ID or campus network.)

-Please read the Enrollment Guide, which will be updated as needed, on the Japanese Language Program website.

Japanese Language Program website

<https://www.jlpk.ihe.tohoku.ac.jp/program/>

Tohoku University Online Class Guide

<https://sites.google.com/view/teleclass-tohoku/forstudents>

Institute for Excellence in Higher Education  
Tohoku University

# A Guide to the Tohoku University Japanese Language Program at Kawauchi (Updated April 19, 2024)

First Term, AY 2024  
Tohoku University Institute for Excellence in Higher Education

The Institute for Excellence in Higher Education offers the Japanese Language Program for International Students to improve the Japanese language proficiency of foreign students and researchers at Tohoku University, and other universities in Sendai. We hope that it will facilitate your everyday activities and research. There are a variety of classes, from beginner to advanced levels, so you can study at the Japanese level appropriate for you.

## Table of Contents

1. Nihongo ID Application/Class Registration .....	1
2. Notes on Attending Class .....	4
3. Orientation video .....	5
4. Level and Subject Codes .....	6
5. Grading and Progression System .....	7
6. Eligibility for Classes .....	9
7. Subjects and Timetable by level .....	10
Level 1 (Beginning) .....	10
Level 2 (Basic) .....	11
Level 3 (Pre-Intermediate) .....	12
Level 4 (Intermediate) .....	13
Level 5 (Upper-Intermediate) .....	14
Level 6 (Advanced) .....	15
Level 0~6 Co-Learning Seminar List .....	16
8. Class Schedule by level .....	17
9. Contact Information .....	20
10. Kawauchi Campus Map .....	21
11. Classroom Locations .....	22

Both online and in-person classes for the Japanese Language Program at Kawauchi use Google Classroom.

## Program Term

April 8 (Mon.) to August 5 (Mon.)

The schedule may change due to the novel coronavirus pandemic. We ask for your understanding and cooperation.

## Nihongo ID Application/Class Registration Schedule

### BE SURE TO REGISTER DURING THE REGISTRATION PERIOD!

#### First Semester: April 8 (Mon.) through August 5 (Mon.)

Nihongo ID Application Period: March 22 (Fri.) – April 22 (Mon.)

Class Registration Period: April 18 (Thu.) - May 7 (Tue.)

#### 2th Quarter: June 4 (Tue.) through August 5 (Mon.)

(Courses in the latter half of the term)

Nihongo ID Application Period: May 24 (Fri.) – May 30 (Thu.)

Class Registration Period: May 27 (Mon.) – June 7 (Fri.)

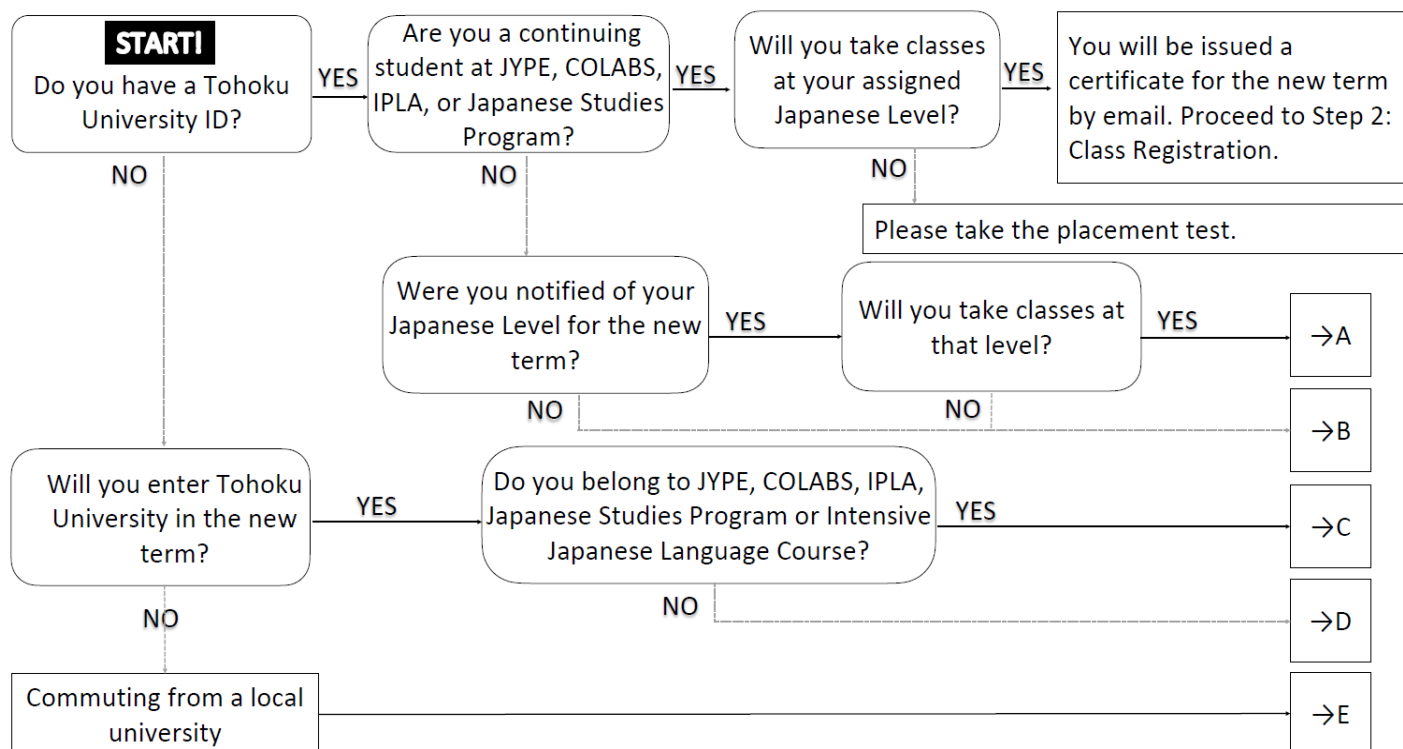
※ Deadlines for dropping classes are as follows.

Term-long Classes: May 31 (Fri.)

Half-term Classes (first part of the term): May 10 (Fri.)

Half-term Classes (second part of the term): June 21 (Fri.)

## 1. Nihongo ID Application/Class Registration



※ You require a Nihongo ID and certificate for the current term to take classes. You cannot use your Nihongo ID from the previous term.

## Step 1 : Nihongo ID Application

March 22 (Fri.) - April 22 (Mon.)

(Courses in the latter half of the term: May 24 (Fri.) –

May 30 (Thu.))

PT=Placement test

\*It may take a few days to issue the Japanese language program ID and level certificate.  
Please acquire them well before the deadline.

### A (enrolled at TU, have an assigned Japanese level, will not take the PT):

(1) Log in to the academic affairs system from the on-campus network to apply for a Nihongo ID.

URL: <https://jlpk.bureau.tohoku.ac.jp/entry/>

\*Please be sure to register your Nihongo ID from the previous term and password with the system.

(2) You will receive a Nihongo ID and Excel file by email. The Excel file is for those who are taking the placement test, so you need not submit it.

(3) Later, you will be sent a certificate showing your Japanese level for the new term.

(4) After the term starts, please perform Step 2.

### B-1 (enrolled at TU, beginner, will not take the PT):

(1) Log in to the academic affairs system from the on-campus network to apply for a Nihongo ID.

URL: <https://jlpk.bureau.tohoku.ac.jp/entry/>

\*Please be sure to choose “beginner” at the question 12 on the system.

(2) You will receive a Nihongo ID by email. Please complete the preparatory assignment on the website below before the start of classes.

URL: <https://www.ihe.tohoku.ac.jp/SJLE/kana/>

(3) Later, you will receive a Level 1 (beginner) certificate by email.

(4) After the term starts, please perform Step 2.

### B-2 (enrolled at TU, studied Japanese before, will take the PT):

(1) Log in to the academic affairs system from the on-campus network to apply for a Nihongo ID.

URL: <https://jlpk.bureau.tohoku.ac.jp/entry/>

\* If you have a Nihongo ID and password from the previous term, please be sure to register them with the system.

(2) You will receive a Nihongo ID and Excel file by email. You will also be provided a link to information on the placement test.

(3) Take the online placement test.

(4) Enter your test results in the Excel file and send it to the provided email address.

(5) You will be sent a certificate showing your Japanese level. If you were notified of a level for the new term, but also have a level determined by your test result, your level will be whichever is higher.

(6) After the term starts, please perform Step 2.

### C-1 (not yet enrolled at TU, beginner, participating in the above programs, will not take the PT):

(1) You will receive a Nihongo ID by email. Please complete the preparatory assignment on the website below before the start of classes.

URL: <https://www.ihe.tohoku.ac.jp/SJLE/kana/>

(2) Later, you will receive a Level 1 (beginner) certificate by email.

(3) After entering TU, please perform Step 2.

**C-2 (not yet enrolled at TU, studied Japanese before, participating in the above programs, will take the PT):**

- (1) You will receive a Nihongo ID and Excel file by email. You will also be provided a link to information on the placement test.
- (2) Take the online placement test.
- (3) Enter your test results on the Excel file and send it to the provided email address.
- (4) You will be sent a certificate showing your Japanese level.
- (5) After entering TU, please perform Step 2.

**D-1 (not yet enrolled at TU, beginner, general, will not take the PT):**

- (1) After entering TU, log in to the academic affairs system from the on-campus network to apply for a Nihongo ID.

URL: <https://jlpk.bureau.tohoku.ac.jp/entry/>

\*Please be sure to choose “beginner” at the question 12 on the system.

- (2) You will receive a Nihongo ID by email. Please complete the preparatory assignment on the website below before the start of classes.

URL: <https://www.ihe.tohoku.ac.jp/SJLE/kana/>

- (3) Later, you will receive a Level 1 (beginner) certificate by email.
- (4) Please perform Step 2.

**D-2 (not yet enrolled at TU, studied Japanese before, general, will take the PT):**

- (1) After entering TU, log in to the academic affairs system from the on-campus network to apply for a Nihongo ID.

URL: <https://jlpk.bureau.tohoku.ac.jp/entry/>

- (2) You will receive a Nihongo ID and Excel file by email. You will also be provided a link to information on the placement test.
- (3) Take the online placement test.
- (4) Enter your test results in the Excel file and send it to the provided email address.
- (5) You will be sent a certificate showing your Japanese level.
- (6) Please perform Step 2.

**E (not affiliated with TU, will take the PT):**

- (1) Send an email to the below address, informing us of your desire to take classes in the Japanese Language Program.

Address: [jlpk@g-mail.tohoku-university.jp](mailto:jlpk@g-mail.tohoku-university.jp)

\*If you are unable to create a Tohoku University ID (Tohoku University email address), you will not be able to take online classes.

- (2) You will receive a survey by email.
- (3) Enter your answers on the survey form and return it by email.
- (4) You will receive a Nihongo ID and Excel file by email. You will also be provided a link to information on the placement test.
- (5) Take the online placement test.
- (6) Enter your test results on the Excel file and send it to the provided email address.
- (7) If you are rated Level 2 (basic) or higher, you will be issued a Nihongo ID and certificate by email.
- (8) Please perform Step 2.

### Attending Classes

April 8 (Mon.) –

(Courses in the latter half of the term: June 4 (Tue.) –)

(1) Please look at the timetable and syllabus for your level and choose the classes you will take.

URL: <https://www.jlpk.ihe.tohoku.ac.jp/syllabi/>

Please check the class code on the HP and register for Google Classroom.

URL: <https://www.jlpk.ihe.tohoku.ac.jp/files/JLPK/classroomcode.pdf>

(2) Please join classes suitable for your level. Please show your certificate and ask for the instructor's permission.

\*Class sizes are limited. Students will be accepted on a first-come basis.

\*Some classes preferentially accept students from certain programs.

\*If you decide not to take a class, please contact your instructor immediately and withdraw from Google Classroom.

### Step 2: Class Registration

April 18 (Thu.) - May 7 (Tue.)

(Courses in the latter half of the term: May 27 (Mon.) – June 7 (Fri.))

Log in to the academic affairs system and register your classes using the class registration screen.

Academic affairs system : <https://jlpk.bureau.tohoku.ac.jp/student/login.php>

- ※ You will only be able to register only classes for which you have received permission from the instructors.
- ※ IPLA students will be informed about registration in a separate email. Do NOT register with the above system.

\*Courses in the latter half of the term

	JLP course code
Level 1 (Beginner)	M100
Level 2 (Basic)	C250b/c, K250b/c
Level 3 (Pre-intermediate)	A350, C350-R/W, C350-L/S
Level 5 (Upper-Intermediate)	HS500(Intensive class)

## 2. Notes on Attending Class

1. Be sure to register for classes. If you do not, you will not be able to take classes offered by this program.
2. You cannot register for classes after the deadline (May 7(Tue.)).
  - ※ The deadline to register for classes taught in the latter half of the term is June 7(Fri.).
3. Students enrolled at universities in and around Sendai are eligible to take classes. Relatives etc. of international students are not eligible to attend classes.
  - ※ Those enrolled in universities other than Tohoku University are eligible to take classes if they are Level 2 or higher.
4. Read the syllabus before registering for classes to learn about class goals, content, and how performance is evaluated.

Syllabus: <https://www.jlpk.ihe.tohoku.ac.jp/syllabi/>

(after March 22)

5. Please purchase your textbooks at the bookstore in the Kawauchi Campus Welfare Facilities (see B01 in the Kawauchi Campus Map). Using copied textbooks (paper photocopies, or digital copies downloaded from the Internet) in class is forbidden. Students using such copies will not be permitted to attend class. Making illegal copies of copyrighted materials is forbidden under Japanese law.
6. Class sizes are limited. Students will be accepted on a first-come basis, so you may not be able to take all your first-choice classes.

Intensive Learning Classes up to Pre-intermediate (excluding H150), NS060	Limit: 10
C100, C110ab, C120, M100, R150ab, H150ab, LJ100, C200, C210, C220, R250, K250a, XR300, CC420, FT400, LC420, SC420, CP520, DU500, PC520, JC520, JL500, JM500, FM520, PW500, HS500, GC680, IC600, MH600, AD000	Limit: 15
K100ab, C320, C420, BJ480	Limit: 20
Other	Limit: 25

7. If you must be absent from class, inform the instructor directly or via a classmate. If you do not attend at least two-thirds of the total number of classes, you will receive a "D" (fail).
8. Failure to follow the above rules may result in losing eligibility to attend classes in this program.

### 3. Orientation video

The video below contains instructions to guide you through enrollment, from applying for a Nihongo ID to class registration. Please watch it.

<https://www.jljk.ihe.tohoku.ac.jp/video/>

## 4. Level and Subject Codes

1. Japanese levels are numbered 1 through 6. Attainment goals are shown in the below table.

	Attainment Goals		
		CEFR/JFS	JLPT
Level 1 (Beginner)	Students will acquire conversation, reading, and writing abilities necessary for daily life.	A1	N5
Level 2 (Basic)	Students will acquire speaking, listening, reading, and writing abilities for a variety of everyday situations.	A2.1	N4
Level 3 (Pre-intermediate)	Students will acquire basic Japanese skills needed for student life and attending university classes in Japan.	A2.2	N3
Level 4 (Intermediate)	Students will acquire skills needed to read articles and essays on familiar topics of interest and write simple reports. They will also learn to listen to lectures and express their own opinions in Japanese.	B1	N2
Level 5 (Upper-Intermediate)	Students will acquire Japanese skills needed to read academic texts, write reports, listen to lectures, and make presentations.	B2	N1
Level 6 (Advanced)	Students will acquire Japanese skills needed to understand specialized academic texts, write reports, listen to lectures related to their majors, and give seminar presentations.	C1	

CEFR: Common European Framework of Reference for Languages

JFS: JF Standard for Japanese-Language Education

JLPT: Japanese Language Proficiency Test

2. Please see below for an explanation of Subject Codes.

**B 1 0 0**

**Abbreviated Class Subject**

C(Comprehensive Japanese)	Learn grammar and vocabulary according to the students' level, extend "listening" "talking" "reading" "writing" skills, and comprehensively acquire Japanese language proficiency necessary for student life in Japan.
B (Basic Japanese for Business Communication)	Learn elementary conversational skills needed for various aspects of everyday life in Japan, and simple expressions used in business.
G (Grammar)	Study grammar, build fundamental Japanese skills.
L (Listening Comprehension)	Acquire listening skills necessary for student life, such as listening to lectures, understanding explanations, and so on.
S (Speaking/Conversation)	Acquire speaking skills necessary to student life, learn to make oral presentations.
R (Reading Comprehension)	Acquire fundamental reading comprehension skills necessary to read specialized/academic texts.
W (Writing/Composition)	Acquire fundamental writing skills necessary to write research plans, research papers, etc.
A(Applicative Practice)	Acquire the ability to apply the Japanese language.
H (Hiragana/Katakana)	Learn hiragana and katakana syllabaries.
K (Kanji/Vocabulary)	Learn kanji and its related vocabulary.

**Japanese Level (Levels 1–6)**

Priority/Exclusive Program	
0	No Priority/ Non-exclusive
1	JYPE/COLABS
2	IPLA
5	Intensive Japanese Language Program
6	Japanese Language & Culture Study Program
7	GPEM
8	DATEntre (Employment Support Program)
9	General Education



## 5. Grading and Progression System

1. The grading scale for this program is as follows.

AA	Particularly excellent (90-100 points).
A	Excellent (80-89 points).
B	Good (70-79 points).
C	Passed (60-69 points).
D	Failed (0-59 points).
E	Withdrew from the class.

- ※ You will be notified of your grades at the end of each term.
- ※ If you wish to withdraw from a class, contact the class's instructor. JYPE, COLABS, and IPLA students should contact the Student Exchange Division. If you stop attending class without withdrawing, you will receive a "D."
- ※ Deadlines for dropping classes are as follows.  
Term-long Classes: May 31  
Half-term Classes (first part of the term): May 10  
Half-term Classes (second part of the term): June 21
- ※ You will also receive a "D" if you do not attend at least two-thirds of the total number of classes.
- ※ If you require a certificate (Seiseki Shoumeisho), please ask for it at the International Education Section of the Student Exchange Division (p.20).
- ※ In general, only JYPE, COLABS, and IPLA students receive credit for classes registered in the Japanese Language Program; other students will not receive credit. However, some departments may approve credits for these classes. For details, inquire with the relevant staff at your department.

2. This program's placement test waiver system is described below.

In the Japanese Language Education Program students undergo a placement test at the beginning of the term and take classes appropriate to their level. However, students taking classes for consecutive terms may take classes one level higher than their current level in the following term without retaking the placement test if they meet the conditions in the table below (note that the following conditions pertain to grades obtained within a single semester and do not apply to grades acquired over multiple semesters).

Current Term	Conditions	Following Term
Level 1	Achieve a grade of "A" or "AA" in one of the following: C100, C110, C120, or C150	→Level 2
Level 2	Achieve a grade of "A" or "AA" in one of the following: C200, C210, C220, or C250	→Level 3
Level 3	Achieve a grade of "A" or "AA" in one of the combinations numbered ① to ⑤ below ① C300 or C320 ② (C310-R/W or C350-R/W) and (C310-L/S or C350-L/S) ③ (C310-R/W or C350-R/W) and one skill-based class ④ (C310-L/S or C350-L/S) and one skill-based class ⑤ Three skill-based classes *Skill-based classes: L300, S300, R300, W300	→Level 4
Level 4	Achieve a grade of "A" or "AA" in one of the combinations numbered ① to ⑤ below ① C400 or C420 ② C410-R/W and C410-L/S ③ C410-R/W and one skill-based class ④ C410-L/S and one skill-based class ⑤ Three skill-based classes* *Skill-based classes: R400, S400, L400, W400	→Level 5
Level 5	Achieve a grade of "A" or "AA" in ① or ② below ① C500 and one skill-based class ② Three skill-based classes* *Skill-based classes: R500, S590, L500, W500	→Level 6

\*Two "B" grades will be counted as one "A" grade

#### Continuing JYPE, COLABS, and IPLA students

- Continuing students who are Level 1 to 3 ONLY may proceed to the next higher "Tentative" level with "B" or "C" grades for the conditions shown in the table above.
- Students of all levels who obtained grades of "C" or higher in the previous term CANNOT register/take the same classes again in the following term.

#### Students in Intensive Learning Classes

If you obtain a grade of "A" or better in C150 or C250, you may take classes that are one difficulty level higher than your current level in the second half of the term. If you obtain a grade of "B" or "C" in C150 or C250, you may take the next higher "Tentative" difficulty level but only if you will continue taking the class in the second half of the term.

## 6. Eligibility for Classes

Classes that can be taken at each level are as follows.

- ※ If your level is marked "Tentative," you may register for classes both at your tentative level, and one level below. (E.g. if you are "Level 4 (Tentative)," you may register for both Level 4 and Level 3 classes at the same time.)
- ※ Those JYPE, COLABS, or IPLA student who are judged to be "Tentative" 2, 3, or 4 level have to decide whether to enroll in classes EITHER in your tentative level OR one level below. You cannot register for classes both at your tentative level and one level below at the same time (for example, if you are "Level 4 (tentative)," you must choose whether to register for Level 3 classes or Level 4 classes). Those JYPE, COLABS, or IPLA student who are judged to be "Tentative" 5 or 6 level may enroll in classes in your tentative level and those one level below simultaneously (for example, if you are "Level 6 (tentative)," you may enroll in Level 5 classes and Level 6 classes simultaneously).

Levels			Comprehensive	Listening	Speaking	Reading	Writing	Application/ Practical	Kana	Miscellaneous
1	2 (Tentative)		C100, C110ab, C120, C150ab, M100			R150ab		A150ab*	H150ab	AD000, LJ100
2		3 (Tentative)	C200, C210, C220,C250a, C250bc			R250		A250a, A250bc*		AD000, LJ100, XR300
3	4 (Tentative)		3 (Tentative)	C320, C310-L/S, C310-R/W, C350-L/S, C350-R/W	L300	S300	R300	W300	A350	
4		5 (Tentative)		C420, C410-L/S, C410-R/W	L400	S400	R400	W400		
5	6 (Tentative)		5 (Tentative)	C500	L500	S590	R500	W500		
6					L690	S690	R690	W690		

1. Classes marked with an asterisk (\*) are exclusively for that program's students. Students from other programs cannot take those classes.

2. You cannot take 2 or more classes whose codes begin with the same letter (e.g. C210 and C220, R400 and R500 etc.). Also, you cannot simultaneously take C classes with C-L/S or C-R/W classes (However, we recommend taking C-L/S and C-R/W simultaneously. you can simultaneously take C-L/S with S or L classes, and C-R/W with R or W classes).

Kanji Level	Kanji
K1	K100ab, K150ab
K2	K200, K250a, K250bc
K3	K300ab
K4	K400
K5	K500
K6	K600

3. You must attend every session of class even if the class meets two or more times each week.

4. If a two-letter code appears in the "Other" section, the class is a seminar. These are International Co-learning Seminars, except for classes marked BJ, CL, HS, and NS International and Japanese students take International Co-learning Seminars together. They participate in discussions and cooperative projects to deepen their intercultural understanding. Special auditing students, non-degree students, undergraduate students, and graduate students can receive credit for International Co-learning Seminars if they register them as General Education subjects. For further details, inquire with your department's Academic Affairs Section. (p.16)

5. For kanji classes, please select just one class at your designated level, or one level below or above that level. However, if the instructor does not give permission, you cannot take the class.

## 7. Subjects and Timetable by Level

### Level 1 (Beginning)

Course Title	JLP course code	Class	Schedule	Notes
Beginning Comprehensive Japanese	C100		Wed 5-6 · Fri 5-6	Online class
	C110	a	Mon 1-2 · Wed 1-2	a and b will provide same contents.
		b	Mon 1-2 · Wed 1-2	
	C120		Wed 1-2 · Fri 1-2	
	C150	a	Mon 1-2 · Tue 1-2 ·	Express (first half term) a and b will provide same contents.
		b	Thu 1-2 · Fri 1-2	
Minimal Japanese	M100		Tue 4-5 · Thu 4-5	
Beginning Japanese Reading Comprehension	R150	a	Fri 3	a and b will provide same contents.
		b	Fri 3	
Beginning Japanese Applicative Practice	A150	a	Tue 3	Only IJLC students* Express (first half term) a and b will provide same contents.
		b	Tue 3	
Hiragana/Katakana	H150	a	Apr. 8, 9 & 11 (8:50-14:30)	a and b will provide same contents.
		b		
Beginning Japanese Kanji/Vocabulary	K100	a	Mon 3	a and b will provide same contents.
		b	Wed 3	
	K150	a	Mon 3 · Thu 3	Express (first half term) a and b will provide same contents.
		b	Mon 3 · Thu 3	

\*IJLC Students → Intensive Japanese Language Course Students

Co-learning Seminar Course Title	JLP course code	Schedule	General Education Course Code / Notes
Beginner Aikido learning with Japanese students	AD000	Thu 3	CB43307 / In-person class ※ <sup>1</sup> More details on Google Classroom
Learning Japanese Culture through Comedy	LJ100	Wed 5	CB35102

\* Google Classroom codes: <https://www.jlpc.ihe.tohoku.ac.jp/files/JLPK/classroomcode.pdf>

#### Timetable① Course code Class Instructor (Classroom)

Final timetable ① Course leader Class instructor (Classroom)						
	1 8 : 50- 10 : 20	2 10 : 30- 12 : 00	3 13 : 00- 14 : 30	4 14 : 40- 16 : 10	5 16 : 20- 17 : 50	6 18 : 00- 19 : 30
M o n	C110a Ms. Azumi (C306)		K100a Ms. Mikoda(C402)			
	C110b Ms. Mikoda(C402)					
	C150a Ms. Usui(R115)		K150a Ms. Yokosawa (R115)			
	C150b Ms. Suzuki(R105)		K150b Ms. Mishima (R105)			
T u e	C150a Ms. Kikuchi(R115)		A150a Mr. Uehara(R115)	M100 Ms. Ohori(C204)		
	C150b Ms. Kashiwagi(R105)		A150b Ms. Kashiwagi (R105)			
W e d	C110a Ms. Seki(C306)		K100b Ms. Usui (C307)		C100 Ms. Miyu Takahashi(Online)	
	C110b Ms. Azumi (C307)				LJ100 Ms. Suematsu (A307)	
	C120 Ms. Backley(C401)					
T h u	C150a Ms. Azumi (R105)		K150a Ms. Sugaya(R115)	M100 Ms. Suzuki(A303)		
	C150b Ms. Shukuri(R107)		K150b Ms. Mikoda(R105)			
			AD000 Ms. Narita(※ <sup>1</sup> )			
F r i	C120 Ms. Ohori(C404)		R150a Ms. Endo(R115)		C100 Ms. Uchiyama (online)	
	C150a Ms. Mishima(R115)					
	C150b Ms. Seki(R105)		R150b Ms. Mishima (R105)			

#### Timetable②: H150

3days intensive course to master Hiragana and Katakana

	Class	1 8:50 ~ 10:20	2 10:30 ~ 12:00	3 13:00 ~ 14:30
Apr. 8 Mon	a	Ms. Usui (R115)		Ms. Yokosawa (R115)
	b	Ms. Suzuki (R105)		Ms. Mishima (R105)
Apr. 9 Tue	a	Ms. Kikuchi (R115)		Mr. Uehara (R115)
	b	Ms. Kashiwagi (R105)		Ms. Kashiwagi (R105)
Apr. 11 Thu	a	Ms. Azumi (R105)		Ms. Sugaya (R115)
	b	Ms. Shukuri (R107)		Ms. Mikoda (R105)

※  : Co-learning Seminar(p.16)

※ The classrooms which are titled with "R" are located in International Exchange Building (A12 in the Kawauchi Campus Map).

## Level 2(Basic)

Course Title	JLP course code	Class	Schedule	Notes
Basic Comprehensive Japanese	C200		Mon 5-6 · Thu 5-6	Online class
	C210		Mon 1-2 · Wed 1-2	
	C220		Wed 1-2 · Fri 1-2	
	C250	a	Mon 1-2 · Tue 1-2 · Thu 1-2 · Fri 1-2	Express (first half term)
		b	Mon 1-2 · Tue 1-2 · Thu 1-2 · Fri 1-2	Express (latter half term) b and c will provide same contents.
		c	Mon 1-2 · Tue 1-2 · Thu 1-2 · Fri 1-2	
Basic Japanese Reading Comprehension	R250		Mon 3	
Basic Japanese Applicative Practice	A250	a	Tue 4	Express (first half term)
		b	Tue 3	Only IJLC students*
		c	Tue 3	Express (latter half term) b and c will provide same contents.
Basic Japanese Kanji/Vocabulary	K200		Mon 3	
	K250	a	Thu 3	
		b	Mon 3 · Thu 3	Express (latter half term) b and c will provide same contents.
		c	Mon 3 · Thu 3	

\*IJLC Students →Intensive Japanese Language Course Students

Co-learning Seminar Course Title	JLP course code	Schedule	General Education Course Code / Notes
Beginner Aikido learning with Japanese students	AD000	Thu 3	CB43307/ In-person class ※ <sup>1</sup> More details on Google Classroom

\*Other Intercultural Co-Learning classes are available in addition to those shown above. (p.16)

\* Google Classroom codes: <https://www.jlpc.ihe.tohoku.ac.jp/files/JLPC/classroomcode.pdf>

### Timetable Course code Class Instructor (Classroom)

Time Table	Course Code Class Instructor Classroom					
	1 8 : 50-10 : 20	2 10 : 30-12 : 00	3 13 : 00-14 : 30	4 14 : 40-16 : 10	5 16 : 20-17 : 50	6 18 : 00-19 : 30
Mon.	C210 Mr. Choi(C401)		K200 Mr. Choi(C401)		C200 Ms. Yan(online)	
	C250a Ms. Sawabe(C305)		K250b Ms. Yokosawa(R115)			
	C250b Ms. Usui(R115)		K250c Ms. Mishima(R105)			
	C250c Ms. Suzuki(R105)		R250 Ms. Usui(C403)			
Tue.	C250a Ms. Ohori(C403)		A250b	A250a Mr. Mori(C401)		
	C250b Ms. Kikuchi(R115)		Mr. Uehara(R115)			
	C250c Ms. Kashiwagi(R105)		A250c Ms. Kashiwagi(R105)			
Wed.	C210 Ms. Suzuki(C402)			XR300 Ms. Hayashi(A402)	LJ100 Ms. Suematsu (A307)	
	C220 Ms. Kashiwagi(C404)					
Thu.	C250a Ms. Kashiwagi(C406)		K250a Mr. Choi(C405)		C200 Mr. Choi(online)	
			K250b Ms. Sugaya(R115)			
	C250b Ms. Azumi (R105)		K250c Ms. Mikoda(R105)			
	C250c Ms. Shukuri(R107)		AD000 Ms. Narita (※ <sup>1</sup> )			
Fri.	C220 Ms. Backley(C405)					
	C250a Mr. Mori(C403)					
	C250b Ms. Mishima(R115)					
	C250c Ms. Seki(R105)					

※   : Co-learning Seminar(p.16)

※ The classrooms which are titled with "R" are located in International Exchange Building (A12 in the Kawauchi Campus Map).

### Level 3 (Pre- Intermediate)

Course Title	JLP course code	Class	Schedule	Notes
Pre-Intermediate Comprehensive Japanese	C320		Wed 1-2 · Fri 1-2	
Pre-Intermediate Comprehensive Japanese (Reading/Writing)	C310-R/W		Wed 1-2	
	C350-R/W		Tue 1-2 · Fri 1-2	Express (latter half term)
Pre-Intermediate Comprehensive Japanese (Listening/Speaking)	C310-L/S		Mon 1-2	
	C350-L/S		Mon 1-2 · Thu 1-2	Express (latter half term)
Pre-Intermediate Japanese Listening Comprehension	L300		Fri 5	Online class
Pre-Intermediate Japanese Speaking/Conversation	S300		Thu 4	
Pre-Intermediate Japanese Reading Comprehension	R300		Tue 2	
Pre-Intermediate Japanese Writing/Composition	W300		Tue 3	
Pre-Intermediate Japanese Applicative Practice	A350		Tue 4	Express (latter half term)
Pre-Intermediate Japanese Kanji/Vocabulary	K300	a	Tue 3	a and b will provide same contents.
		b	Fri 3	

Co-learning Seminar Course Title	JLP course code	Schedule	General Education Course Code / Notes
Beginner Aikido learning with Japanese students	AD000	Thu 3	CB43307/ In-person class ※ <sup>1</sup> More details on Google Classroom
Connecting the World via XR and the Metaverse	XR300	Wed 4	CB34105

\*Other Intercultural Co-Learning classes are available in addition to those shown above. (p.16)

\* Google Classroom codes: <https://www.jlpg.ihe.tohoku.ac.jp/files/JLPK/classroomcode.pdf>

### Timetable

	1 8 : 50-10 : 20	2 10 : 30-12 : 00	3 13 : 00-14 : 30	4 14 : 40-16 : 10	5 16 : 20-17 : 50	6 18 : 00-19 : 30
Mon.	C310-L/S Ms. Yokosawa(C403)					
	C350-L/S Ms. Sawabe(C305)					
Tue.	C350-R/W Ms. Ohori(C403)		K300a Ms. Kikuchi(C401)	A350 Mr.Mori(C401)		
		R300 Mr. Uehara (C404)	W300 Ms.Sawabe(C404)			
Wed.	C310-R/W Ms. Mishima(C406)			XR300 Ms. Hayashi(A402)	LJ100 Ms. Suematsu (A307)	
	C320 Ms. Usui(C405)					
Thu.	C350-L/S Ms. Kashiwagi(C406)		AD000 Ms. Narita (※ <sup>1</sup> )	S300 Ms. Shukuri(C306)		
Fri.	C320 Ms. Azumi (C406)		K300b Ms. Sugaya(C103)		L300 Ms. Azumi(online)	
	C350-R/W Mr. Mori(C403)					

※   : Co-learning Seminar(p.16)

## Level 4 (Intermediate)

Course Title	JLP course code	Schedule	Notes
Intermediate Comprehensive Japanese	C420	Wed 1-2 · Fri 1-2	
Intermediate Comprehensive Japanese (Reading/Writing)	C410-R/W	Wed 1-2	
Intermediate Comprehensive Japanese (Listening/Speaking)	C410-L/S	Mon 1-2	
Intermediate Japanese Listening Comprehension	L400	Fri 5	Online class
Intermediate Japanese Speaking/Conversation	S400	Tue 3	
Intermediate Japanese Reading Comprehension	R400	Mon 4	
Intermediate Japanese Writing/Composition	W400	Tue 1	
Intermediate Japanese Kanji/Vocabulary	K400	Tue 3	
Intermediate Business Japanese	BJ480	Thu 5	first half term only
Japanese Language and Culture Seminar	NS060	Wed 2	Only Japanese Language & Culture Study Program students

Intermediate Co-learning Seminar Course Title	JLP course code	Schedule	General Education Course Code / Notes
Beginner Aikido learning with Japanese students	AD000	Thu 3	CB43307/ In-person class ※ <sup>1</sup> More details on Google Classroom
Improving Japanese communication skills through project-based learning on issues in the world and Japan	CC420	Wed 2	CB32120
Funny Talks and Language	FT400	Mon 2	CB12106
Unique Aspects of Japanese Language and Culture	LC420	Thu 3	CB43111
Seeing Home Country and Area from Japan	SC420	Fri 4	CB54104

\*Other Intercultural Co-Learning classes are available in addition to those shown above. (p.16)

\* Google Classroom codes: <https://www.jlph.ihe.tohoku.ac.jp/files/JLPK/classroomcode.pdf>

### Timetable Course code Class Instructor (Classroom)

	1 8 : 50-10 : 20	2 10 : 30-12 : 00	3 13 : 00-14 : 30	4 14 : 40-16 : 10	5 16 : 20-17 : 50	6 18 : 00-19 : 30
Mon.	C410-L/S Mr. Mori(C404)	FT400 Ms. Shukuri(C302)		R400 Ms. Usui(C403)		
Tue.	W400 Ms. Akiko Takahashi(C404)	PC520 Ms. Watanabe (M203)	K400 Ms. Mikoda(C402) S400 Mr. Nakamura (A405)		FM520 Ms. Watanabe (C203)	
Wed.	C410-R/W Ms. Ohori(C408) C420 Ms. Sawabe(C407)	CC420 Ms. Suematsu (M204) NS060 Ms. Sugaya(C403)		XR300 Ms. Hayashi(A402)	DU500 Ms. Kojima(A202)	
Thu.			LC420 Ms. Backley(A303) AD000 Ms. Narita (※ <sup>1</sup> )		BJ480 Ms. Suzuki(A303)	
Fri.	C420 Mr. Choi(C407)			SC420 Ms. Mishima(A106)	L400 Ms.Shukuri(online)	

※   : Co-learning Seminar(p.16)

## Level 5 (Upper-Intermediate)

Course Title	JLP course code	Schedule	Notes
Upper-Intermediate Comprehensive Japanese	C500	Fri 1-2	
Upper-Intermediate Japanese Listening Comprehension	L500	Fri 5	Online class
Upper-Intermediate Japanese Reading Comprehension	R500	Mon 4	
Upper-Intermediate Japanese Speaking/Conversation	S590	Thu 1	General Education: Japanese C Course Code : CB41112
Upper-Intermediate Japanese Writing/Composition	W500	Tue 4	
Upper-Intermediate Japanese Kanji/Vocabulary	K500	Thu 3	
Upper-Intermediate Japanese Culture Seminar: Japanese Classical Literature	CL500	Wed 4	
Upper-Intermediate Japanese Culture Seminar: An Introduction to Early Modern Handwritten Sources	HS500	Intensive Summer Class Aug. 5-8	First class: 8/5, 8:50-16:10 kenichiro.aratake.c2*tohoku.ac.jp Replace * with @. Those who wish to enroll should send an email to the address above by July 3.
Japanese Language and Culture Seminar	NS060	Wed 2	Only Japanese Language & Culture Study Program students

Upper-Intermediate Co-learning Seminar Course Title	JLP course code	Schedule	General Education Course Code / Notes
Beginner Aikido learning with Japanese students	AD000	Thu 3	CB43307/ In-person class ※ <sup>1</sup> More details on Google Classroom
Cooperative Project with Students from Different Backgrounds	CP520	Thu 3	CB43112
Deepening one's understanding of oneself and others	DU500	Wed 5	CB35101
Participate in local community activities in Sendai and interact with a diverse range of people!	PC520	Tue 2	CB22126
Japanese Culture and Communication	JC520	Tue 3	CB23108
Japanese Language in Contrast	JL500	Wed 2	CB32119
Japanese Language and Culture in Movies	JM500	Tue 4	CB24110
Learn about Japanese fermented food and consider the overseas expansion of Sendai Miso	FM520	Tue 5	CB25103
Playback Theater Workshop : basic	PW500	Mon 2	CB34106

\*Other Intercultural Co-Learning classes are available in addition to those shown above. (p.16)

\* Google Classroom codes: <https://www.jlpk.ihe.tohoku.ac.jp/files/JLPK/classroomcode.pdf>

**Timetable** Course code Class Instructor (Classroom) ※ : Co-learning Seminar(p.16)

	1 8 : 50-10 : 20	2 10 : 30-12 : 00	3 13 : 00-14 : 30	4 14 : 40-16 : 10	5 16 : 20-17 : 50	6 18 : 00-19 : 30
Mon.		PW500 Ms. M. Mushiake • Mr. H. Mushiake(C301) FT400 Ms. Shukuri(C302)		R500 Ms. Suzuki(C402)		
Tue.		PC520 Ms. Watanabe (M203)	JC520 Ms. Sato(A404)	W500 Ms. Sato(A403) JM500 Mr. Nakamura(A405)	FM520 Ms. Watanabe (C203)	
Wed.		JL500 Mr. Uehara(C204) CC420 Ms. Suematsu(M204) NS060 Ms. Sugaya(C403)		CL500 Ms. Sato(A302)	DU500 Ms. Kojima(A202)	
Thu.	S590 Ms. Sawabe (C401)		K500 Ms. Hayashi(A204) CP520 Ms. Takamatsu(A204) LC420 Ms. Backley(A303) AD000 Ms. Narita (※ <sup>1</sup> )			
Fri.	C500 Ms. Mikoda(C408)	MH600 Mr. Morikawa(C204)		SC420 Ms. Mishima (A106)	L500 Mr. Ichinose (online)	



## Level 6 (Advanced)

Course Title	JLP course code	Schedule	Notes
Advanced Japanese Listening Comprehension	L690	Tue 2	General Education: Japanese E Course Code : CB22135
Advanced Japanese Speaking/Conversation	S690	Thu 2	General Education: Japanese A Course Code : CB42120
Advanced Japanese Reading Comprehension	R690	Tue 3	General Education: Japanese I Course Code : CB23118
Advanced Japanese Writing/Composition	W690	Thu 3	General Education: Japanese G Course Code : CB43113
Advanced Japanese Kanji/Vocabulary	K600	Tue 3	
Japanese Language and Culture Seminar	NS060	Wed 2	Only Japanese Language & Culture Study Program students

Advanced Co-learning Seminar Course Title	JLP course code	Schedule	General Education Course Code / Notes
Beginner Aikido learning with Japanese students	AD000	Wed 3	CB43307/ In-person class ※ <sup>1</sup> More details on Google Classroom
Global Communication	GC680	Tue 4	CB24112
Intercultural Communication Studies: Basics	IC600	Tue 1	CB21106
Intellectual History of Modern Japan	MH600	Fri 2	CB52103

\*Other Intercultural Co-Learning classes are available in addition to those shown above. (p.16)

\* Google Classroom codes: <https://www.jlpk.ihe.tohoku.ac.jp/files/JLPK/classroomcode.pdf>

## Timetable

	1 8 : 50-10 : 20	2 10 : 30-12 : 00	3 13 : 00-14 : 30	4 14 : 40-16 : 10	5 16 : 20-17 : 50	6 18 : 00-19 : 30
Mon.		PW500 Ms. M. Mushiake • Mr. H. Mushiake(C301)				
Tue.	IC600 Ms. Yamamoto (A203)	L690 Ms. Shukuri(C307) PC520 Ms. Watanabe (M203)	K600 Ms. Hayashi (A306) R690 Mr. Zisk(C307) JC520 Ms. Sato(A404)	GC680 Ms. Yamamoto (A303) JM500 Mr. Nakamura (A405)	FM520 Ms. Watanabe (C203)	
Wed.		JL500 Mr. Uehara(C204) NS060 Ms. Sugaya(C403)		CL500 Ms. Sato(A302)	DU500 Ms. Kojima(A202)	
Thu.		S690 Ms. Saito(C401)	W690 Ms. Saito(C401) CP520 Ms. Takamatsu (A204) AD000 Ms. Narita (※ <sup>1</sup> )			
Fri.		MH600 Mr. Morikawa (C204)				

※ : Co-learning Seminar (p.16)

## Level 0~6 Co-Learning Seminar List

Co-learning Seminars: International and Japanese students take International Co-learning Seminars together. They participate in discussions and cooperative projects to deepen their intercultural understanding.

※In some cases, special auditing students, credited non-degree students, and undergraduate students can receive credit for Intercultural Collaborative Learning classes if they register them as General Education subjects.

Inquire with your department's Educational Affairs Section for details and complete registration within the General Education enrollment period.

Course Title	JLP course code	The course schedule	Recommended Level: ◎ Available Level: ○					
			1	2	3	4	5	6
Beginner Aikido learning with Japanese students	AD000	Thu 3	◎	◎	◎	◎	◎	◎
Learning Japanese Culture through Comedy	LJ100	Wed 5	◎	◎	○			
Connecting the World via XR and the Metaverse	XR300	Wed 4		○	◎	◎		
Improving Japanese communication skills through project-based learning on issues in the world and Japan	CC420	Wed 2				◎	◎	
Funny Talks and Language	FT400	Mon 2				◎	◎	
Unique Aspects of Japanese Language and Culture	LC420	Thu 3				◎	◎	
Seeing Home Country and Area from Japan	SC420	Fri 3				◎	◎	
Cooperative Project with Students from Different Backgrounds	CP520	Thu 3					◎	◎
Deepening one's understanding of oneself and others	DU500	Wed 5				○	◎	◎
Participate in local community activities in Sendai and interact with a diverse range of people!	PC520	Tue 2				○	◎	◎
Japanese Culture and Communication	JC520	Tue 3					◎	◎
Japanese Language in Contrast	JL500	Wed 2					◎	◎
Japanese Language and Culture in Movies	JM500	Tue 4					◎	◎
Learn about Japanese fermented food and consider the overseas expansion of Sendai Miso	FM520	Tue 5				○	◎	◎
Playback Theater Workshop : basic	PW500	Mon 2					◎	◎
Global Communication	GC680	Tue 4						◎
Intercultural Communication Studies: Basics	IC600	Tue 1						◎
Intellectual History of Modern Japan	MH600	Fri 2					○	◎

## 8. Class Schedule by level

### Level 1

	April	May	June	July	August
C100	4/10			7/17	
C110a/b	4/15			7/29	
C120	4/10			7/17	
C150a/b	4/12		6/6		
M100			6/11	7/25	
R150a/b	4/12			7/19	
A150a/b	4/16		6/4		
H150a/b	4/8·9·11				
K100a	4/8			7/22	
K100b	4/17			7/17	
K150a/b	4/15		6/10		
AD000	4/11			7/25	
LJ100	4/10			7/17	

### Level 2

	April	May	June	July	August
C200	4/8			7/22	
C210	4/10			7/22	
C220	4/10			7/17	
C250a	4/11		5/31		
C250b/c			6/10	7/26	
R250	4/15			7/29	
A250a	4/16		5/28		
A250b/c			6/11	7/16	
K200	4/15			7/29	
K250a	4/11			7/18	
K250b/c			6/13		8/1
AD000	4/11			7/25	

### Level 3

	April	May	June	July	August
C320	4/10			7/19	
C310-R/W	4/10			7/10	
C350-R/W			6/7	7/23	
C310-L/S	4/15			7/29	
C350-L/S			6/6	7/25	
L300	4/12			7/26	
S300	4/11			7/18	
R300	4/9			7/9	
W300	4/9			7/9	
A350			6/4	7/16	
K300a	4/9			7/9	
K300b	4/12			7/19	
AD000	4/11			7/25	
XR300	4/10			7/17	

### Level 4

	April	May	June	July	August
C420	4/10			7/19	
C410-R/W	4/10			7/17	
C410-L/S	4/15				8/5
L400	4/12			7/19	
S400	4/9			7/16	
R400	4/15			7/29	
W400	4/9			7/9	
K400	4/9			7/9	
BJ480	4/11		6/6		
CC420	4/10			7/17	
FT400	4/8			7/29	
LC420	4/11			7/25	
SC420	4/12			7/26	
AD000	4/11			7/25	
NS060	4/10			7/24	

### Level 5

	April	May	June	July	August
C500	4/12			7/19	
L500	4/12			7/19	
R500	4/8			7/22	
S590	4/11				8/1
W500	4/9			7/9	
K500	4/11			7/18	
CL500	4/10			7/10	
HS500			Intensive Course : Aug. 5th, 6th, 7th, and 8th		
CP520	4/11			7/25	
DU500	4/10			7/24	
PC520	4/9			7/16	
JC520	4/9			7/16	
JL500	4/10			7/17	
JM500	4/9			7/23	
FM520	4/9			7/16	
PW500	4/8			7/22	
AD000	4/11			7/25	
NS060	4/10			7/24	

### Level 6

	April	May	June	July	August
L690	4/9			7/23	
S690	4/11				8/1
R690	4/9			7/23	
W690	4/11				8/1
K600	4/9			7/9	
GC680	4/9			7/16	
IC600	4/9			7/16	
MH600	4/12			7/26	
AD000	4/11			7/25	
NS060	4/10			7/24	

## 9. Contact Information

Frequently Asked Questions are summarized below. Please check them before making inquiries.

<https://www.jljk.ihe.tohoku.ac.jp/inquiry/>

### Inquiries about Japanese Classes

If you don't know which classes to register, or have problems with your classes, please ask your program coordinator. Please send an inquiry by email first. If you need to meet in person, please make an appointment by email.

Program Name	Coordinator (upper row : main coordinator in charge)	Department/Email Address
Japanese Language Program in general	Associate Professor Wataru NAKAMURA	Kawauchi Kita Campus, Kawakita Joint Building 523 Email: wataru.nakamura.a8 * tohoku.ac.jp
	Professor Natsue SUGAYA	Kawauchi Kita Campus, Kawakita Joint Building 522 Email: natsue.sugaya.e1 * tohoku.ac.jp
JYPE COLABS	Professor Natsue SUGAYA	Kawauchi Kita Campus, Kawakita Joint Building 522 Email: natsue.sugaya.e1 * tohoku.ac.jp
	Associate Professor Masako HAYASHI	Kawauchi Kita Campus, Kawakita Joint Building 519 Email: masako.hayashi.c5 * tohoku.ac.jp
IPLA	Associate Professor Yukiko SHUKURI	Kawauchi Kita Campus, Kawakita Joint Building 518 Email: yukiko.shukuri.a5 * tohoku.ac.jp
	Associate Professor Yuko SAWABE	Kawauchi Kita Campus, Kawakita Joint Building 521 Email: yuko.sawabe.b8 * tohoku.ac.jp
Intensive Japanese Language Program	Professor Satoshi UEHARA	Kawauchi Kita Campus, Kawakita Joint Building 520 Email: uehara * he.tohoku.ac.jp
	Associate Professor Yukiko SHUKURI	Kawauchi Kita Campus, Kawakita Joint Building 518 Email: yukiko.shukuri.a5 * tohoku.ac.jp
Japanese Studies Program	Professor Natsue SUGAYA	Kawauchi Kita Campus, Kawakita Joint Building 522 Email: natsue.sugaya.e1 * tohoku.ac.jp

※ The location of the Kawakita Joint Building is shown on A07 in the Kawauchi Campus Map.

※ Replace \* with @ in email addresses.

※ If you need to contact class instructors, please do so through Google Classroom.

### Inquiries about Official Procedures

Student Exchange Division, International Education Section  
Kawauchi Kita Campus Education and Student Support Center, 2F  
(See A01 in the Kawauchi Campus Map)  
Email: sed2\*grp.tohoku.ac.jp

(Nihongo ID application, class registration, placement test, etc.)

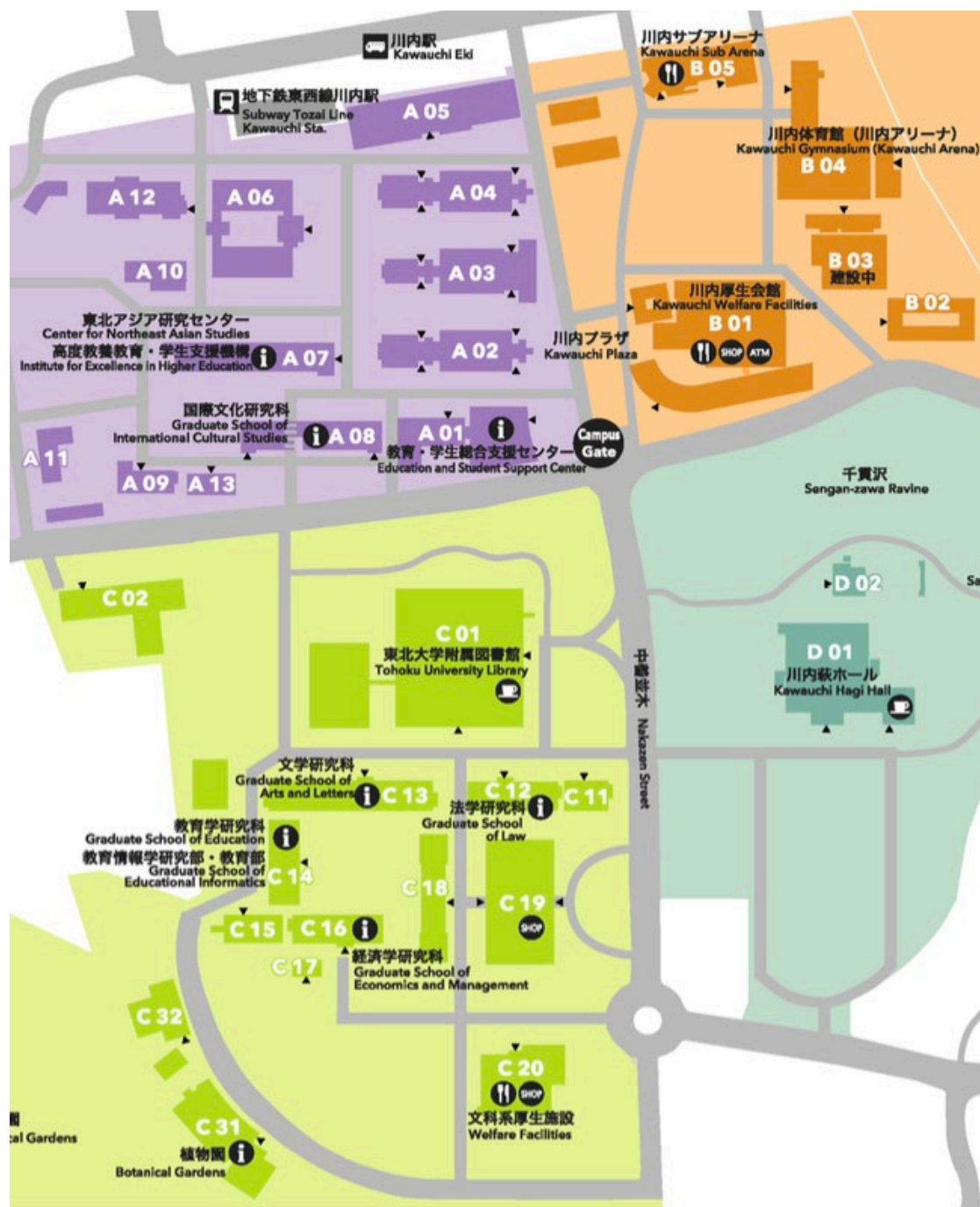
Japanese Language Program at Kawauchi  
Kawauchi Kita Campus International Exchange Building 1F R113 (see A12 in the Kawauchi Campus Map)  
Email: adm-jljk\*g-mail.tohoku-university.jp

Note: 1. Replace \* with @ in email addresses

2. We cannot respond to inquiries on weekends or holidays.

3. We do not issue hours certificates.

## 10. Kawauchi Campus Map



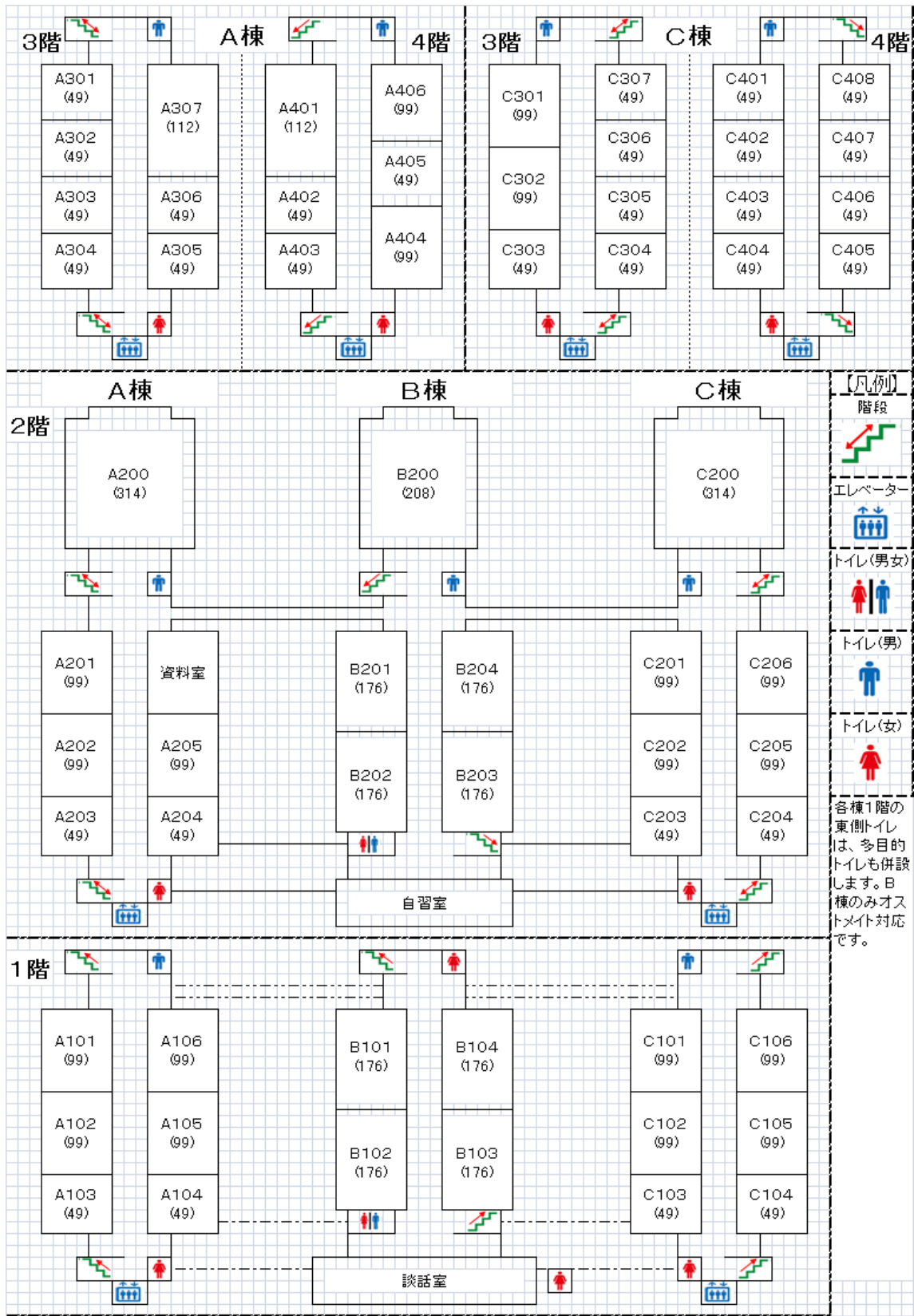
- A 01** 教育・学生総合支援センター  
Education and Student Support Center
- A 02** 講義棟A棟  
Lecture Rooms A
- A 03** 講義棟B棟  
Lecture Rooms B
- A 04** 講義棟C棟  
Lecture Rooms C
- A 05** マルチメディア教育研究棟 (教育情報基盤センター)  
Multimedia Education and Research Complex (Center for Information Technology in Education)
- A 06** 学生実験棟  
Student Laboratories
- A 07** 川北合同研究棟  
Kawauchi Research Forum  
(高度教養教育・学生支援機構/東北アジア研究センター)  
(Institute for Excellence in Higher Education / Center for Northeast Asian Studies)
- A 08** 国際文化研究棟  
Graduate School of International Cultural Studies
- A 09** 保健管理センター  
Student Health Care Center
- A 10** 教育研究基盤支援棟 4  
Education and Research Base Support Building 4
- A 11** 教育研究基盤支援棟 5  
Education and Research Base Support Building 5
- A 12** 国際交流棟  
International Exchange Building
- A 13** 学生相談所  
University Counseling Center

- B 01** 川内厚生会館  
Kawauchi Welfare Facilities
- B 02** 川内サークル部室棟  
Kawauchi Circle and Club Building
- B 03** 川内課外活動共用施設 (川内ホール)  
Kawauchi Extracurricular Activity Shared Facilities (Kawauchi Hall)
- B 04** 川内体育館 (川内アリーナ)  
Kawauchi Gymnasium (Kawauchi Arena)
- B 05** 川内サブアリーナ  
Kawauchi Sub Arena

- C 01** 東北大学附属図書館  
Tohoku University Library
- C 02** 入試センター  
Admission Center
- C 11** 文・法合同研究棟  
Arts and Letters / Law Joint Building
- C 12** 法学研究科棟  
Graduate School of Law
- C 13** 文学研究科棟  
Graduate School of Arts and Letters
- C 14** 文科系総合研究棟 (教育学研究科)  
New Humanities Building (Graduate School of Education)
- C 15** 文科系合同研究棟  
Humanities Building
- C 16** 経済学研究科棟  
Graduate School of Economics and Management
- C 17** 経済学研究科演習室  
Seminar Rooms
- C 18** 中講義棟  
Lecture Rooms
- C 19** 文科系総合講義棟  
Lecture Rooms
- C 20** 文科系厚生施設 (メイプルパーク川内)  
Welfare Facilities (Maple Park Kawauchi)

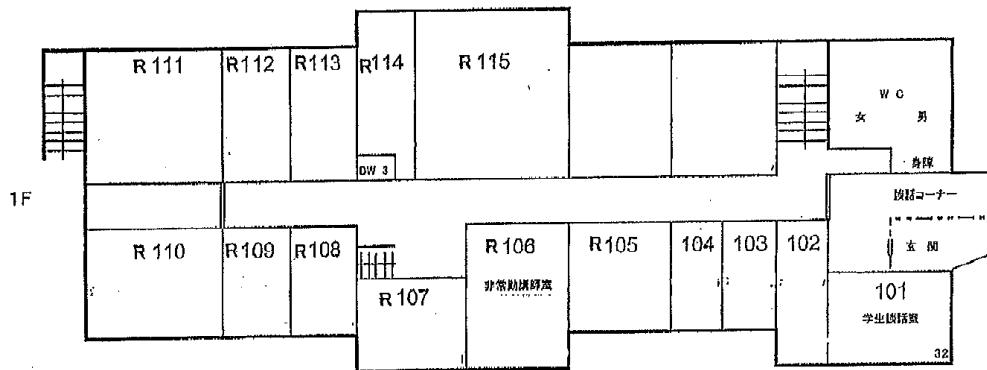
11. Classroom Locations

A, B, and C Classrooms (A02, A03, A04)





## International Exchange Building (A12)



## Multimedia Education and Research Complex (A05)

